

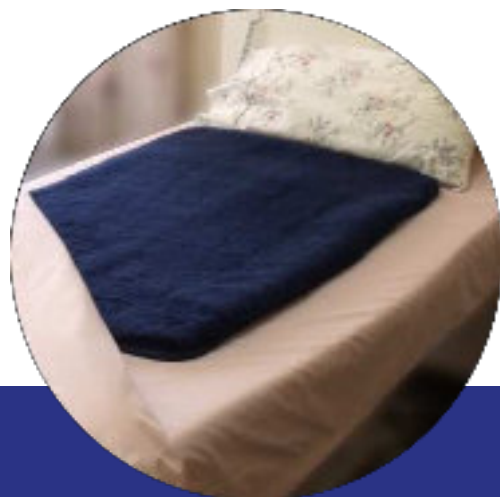
Comfort

Wellbeing

Reliability



Shear Comfort®



XD¹⁹⁰⁰

Exceptional comfort and advanced skincare for the home, hospital, or in care.



100% NATURAL WOOL



Bed Overlays

Rest Assured

Whether lying in bed or sitting in a chair, Shear Comfort® has the overlay for any individual. Shear Comfort® XD¹⁹⁰⁰ overlays not only provide exceptional year round comfort, aids restful sleep and relaxation, but also removes concerns about skin damage and ulceration.



XD Overlay	002701	65cm x 100cm
XD Double Overlay	010027	50cm x 140cm
Classic	003067	75cm x 125cm
Superior	002756	75cm x 150cm
Single Bed	002183(Blue) 002190(White)	92cm x 187cm
Double Bed	002206(Blue) 002213(White)	137cm x 187cm
Queen Bed	002220(Blue) 002237(White)	150cm x 200cm

Children's Overlays

Healthy, Natural development

Restful sleep is an important part of a child's development. Shear Comfort® XD¹⁹⁰⁰ is a proven and trusted means of aiding a child's restful sleep. They also provide comfort and protection for those with delicate skin, or specific skin conditions. For newborn babies who are

fragile and have low weight at birth, the infant shows significant improvement in gaining weight when nursed on Shear Comfort® XD¹⁹⁰⁰ when compared to cotton sheets.



Neonatal	002251	30cm x 50cm
Paediatric	002244	45cm x 75cm

Seating Accessories

Are you sitting comfortably...?



Arm Support Protectors

The Arm Support Protectors securely attaches to a chair's arm support giving the user added comfort and protection, and is especially useful to those who rely on their arm supports to shift body weight.



Cushion-It

The Cushion-It attaches securely to a chair seat or back to provide enhanced comfort and protection, reducing the risk of skin issues, and allowing you to sit for longer periods in total comfort. It allows greater freedom of movement by avoiding uncomfortable friction and shear. Hook and loop strapping allows easy fit and adjustment.



Foot Plate / Calf Protector

The Shear Comfort® Calf Protectors and Foot Plate Protectors fit over calf and foot supports. Fixed by elasticated straps, they provide added comfort by reducing pressure, and offer protection from painful knocks, scrapes, and skin tears.

Arm Support Protectors	002145	Pair
Cushion -It	002152	46cm x 55cm
Foot Plate Protector	002126	Pair
Calf Protector	002138	Pair

Focussed Protectors

Protection where it counts

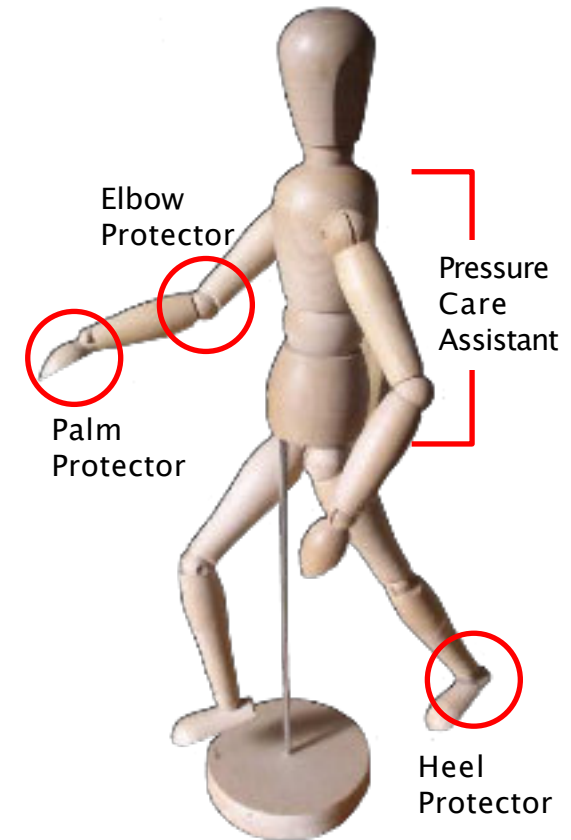
There are some parts of the body that just need that bit of extra care. The Shear Comfort® range of Focussed Protectors are designed to relieve and prevent skin ulcers and irritations in specific at risk areas. By offering targeted support, it allows individuals to benefit from advanced and unencumbered skincare.



Palm Protector

The Palm Protector is designed to provide relief from painful hand contractures and prevents the nails digging into the delicate tissue of the palms.

Palm Protector 003074 Ambidextrous





Elbow Protector

The Elbow Protector redistributes pressure and thus eases blood flow over the bony joint, hence encouraging skin maintenance and repair over this problem area.

Elbow Protector –Small	000813	Pair
Elbow Protector –Medium	002589	Pair
Elbow Protector –Large	002596	Pair



Pressure Care Assistant

The Pressure Care Assistant fits securely to a single bed to provide targeted relief for areas such as the heels or sacrum, which are typically more prone to skin ulcer development. They come with the added benefit of being easy to adjust, transfer and maintain.

Pressure Care Assistant	002169	70cm x 30cm
-------------------------	--------	-------------



Heel Protector

The Heel Protector provides unencumbered security and protection for the at risk heel and ankle areas. The lamb's wool redistributes pressure and reduces shear and friction, while the heat and vapour dissipation qualities ensure comfort in use.

Heel Protector –Small	002268	Pair
Heel Protector –Medium	002275	Pair
Heel Protector –Large	002282	Pair

Total Protection

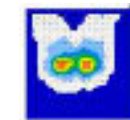
It is fast becoming realised that skin ulcers are not just caused by prolonged pressure alone. Other factors such as Shear, Friction, Moisture, and Heat all play a part. That is why Shear Comfort is specifically designed to combat all external contributory factors to skin ulcer development. All Shear Comfort® XD¹⁹⁰⁰ products have gone through a rigorous testing procedure to assess and evaluate their ability to deliver the advanced skincare you need and deserve.



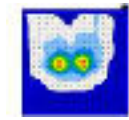
61%

Pressure Redistribution

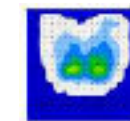
Shear Comfort® XD¹⁹⁰⁰ products have a density of 1900gsm (grams per square meters) of natural lamb's wool, more than standard sheepskins and any other woven wool product, for extra density and effective pressure redistribution. XD¹⁹⁰⁰ is proven to provide 61% reduction of peak pressure compared to the control mattress (Australian Medical Grade Sheepskin reduced peak pressure by 59%).



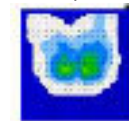
Firm Neutral Surface



800gsm Artificial Sheepskin



Australian Medical Grade Sheepskin



Shear Comfort XD¹⁹⁰⁰

Extended periods of unrelieved pressure leads to capillary collapse and skin ulceration.



38%

Shear and Friction

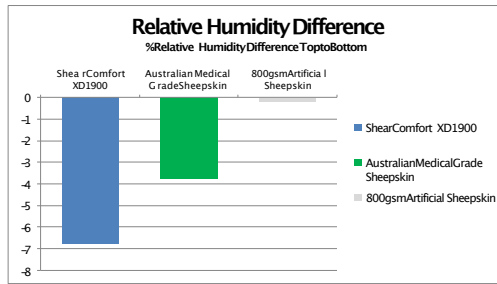
Shear Comfort® XD¹⁹⁰⁰ demonstrated a 38% Reduction of shear and friction forces compared to control mattress (Australian Medical Grade Sheepskin reduced shear and friction by 26%)

Shear & Friction forces result in a distortion of the tissue as it is moved in opposite directions. This distortion of the tissue, which typically occurs when the skin is 'gripped' by a surface, can quickly lead to skin breakdown and ulceration.



Moisture Control

Shear Comfort® XD1900 is proven to wick moisture away from the skin at nearly twice the rate of Australian Medical Grade Sheepskin (which was previously proven to offer the greatest vapour dissipation in a study of 12 commonly administered support surfaces: MHRA 04101). This reduces the risk of maceration, even if prone to heavy perspiration or incontinence.

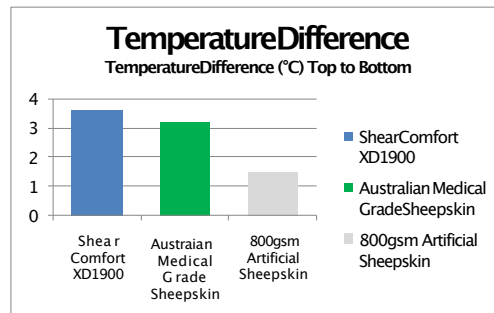


Excessive moisture due to perspiration or incontinence can lead to a weakening of the dermis and maceration of the skin.



Temperature Regulation

Shear Comfort® XD1900 is proven to remove the most heat compared with 800gsm Artificial Sheepskin and Australian Medical Grade Sheepskin (which was previously proven to offer the greatest heat dissipation in a study of 12 commonly administered support surfaces: MHRA 04101).



Localised and systemic elevation of skin temperature can directly and indirectly lead to skin damage through inflammation, maceration, and aggravation.



Infection Control

Shear Comfort® XD1900 is warranted to withstand 50 washes at up to 80°C for bacteria eradication, ensuring you get the required infection control, time and time again.

The Natural Progression

Shear Comfort® XD1900 builds on the proven capabilities of Shear Comfort® Australian Medical Grade Sheepskin to provide an exceptional skincare solution.



Shear Comfort® XD1900 products are proven to effectively redistribute pressure, reduce shear and friction and successfully wick moisture, which all work to prevent skin damage and ulceration.

Shear Comfort® XD1900 has an extra high density and long pile, which further improves on the capabilities of Shear Comfort Australian Medical Grade Sheepskin.

Shear Comfort® XD1900 effectively regulates body temperature and can therefore be used both in summer and winter.

Shear Comfort® XD1900 products are easy to wash, maintain, and care for, as they can be washed with standard household washing detergents, and can be tumble dried. They also offer effective infection control as they can be washed repeatedly at up to 80°C.

Shear Comfort® is manufactured by Healthcare Innovations Australia Pty Ltd. For more information or to enquire about purchasing a product, contact us, or visit your local distributor.



3/10-12 Carsten Rd, Gepps Cross, SA 5094, Australia.

Phone: 1300 499 282

Intl: +61 8 8359 0804

Fax: 08 8125 5990

Email: sales@hcibiz.com.au

www.healthcareinnovations.com.au



211 Mcker Linkway | Birinya | QLD | 4675
☎ 1371 5325-1231 📠 1371 5391-4012